



# Welsh Baccalaureate

## Key information



Llywodraeth Cymru  
Welsh Government

## Animation



<http://qualifiedforlife.org.uk/welsh-baccalaureate>

## New Emphasis

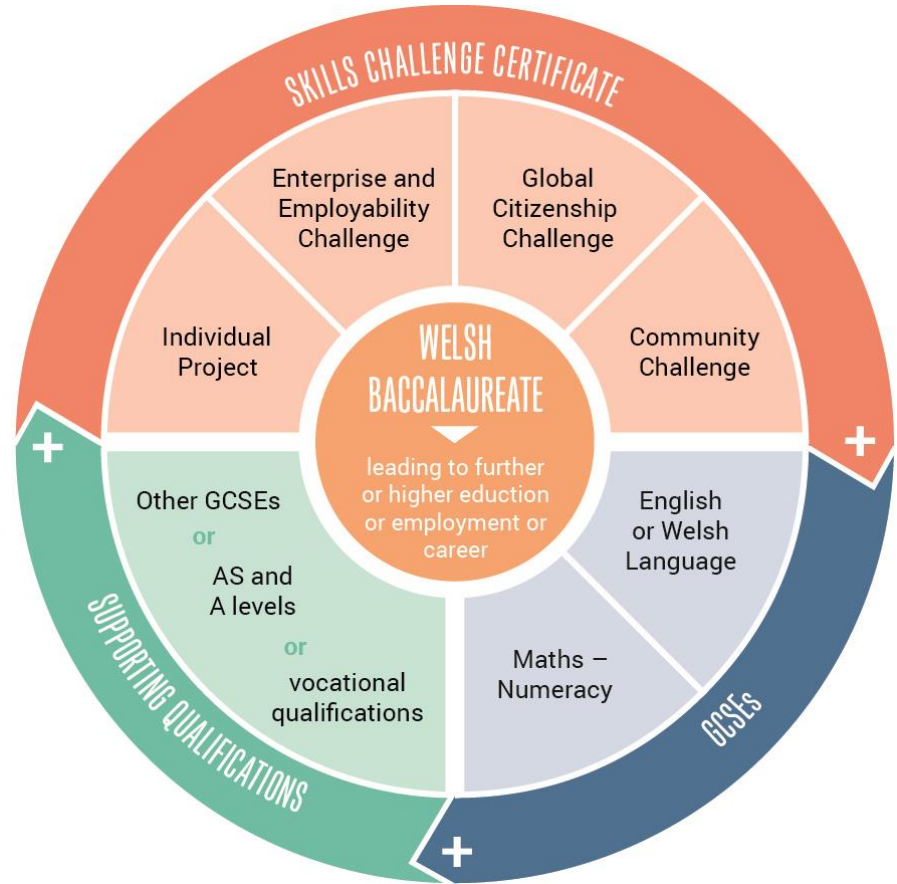
- Stronger focus on development of skills for work and higher education
- Clear, purposeful assessment through new GCSEs, Individual Project and 'Challenges'
- An engaging framework for learners to develop world class skills

## Key elements

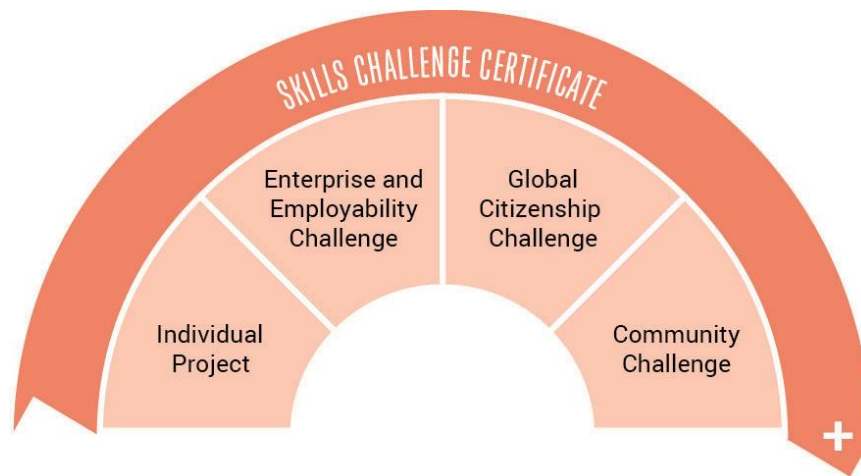
3 elements:

1. Skills Challenge Certificate (1 individual project and 3 challenges)
2. GCSE English Language or Welsh Language and GCSE Mathematics – Numeracy.
3. Supporting qualifications: (For example, other GCSEs; A levels/AS qualifications; vocational qualifications)

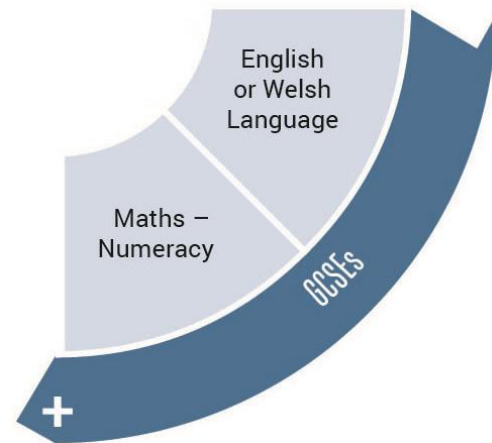
# High Level Model



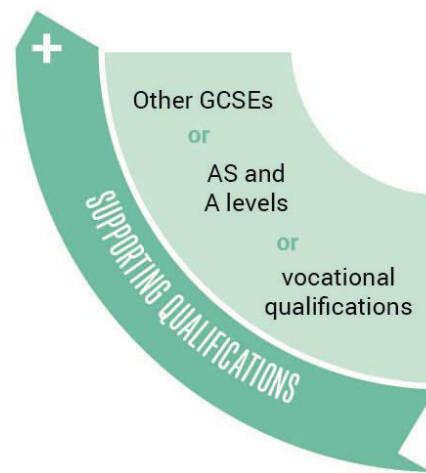
# Skills Challenge Certificate



GCSEs

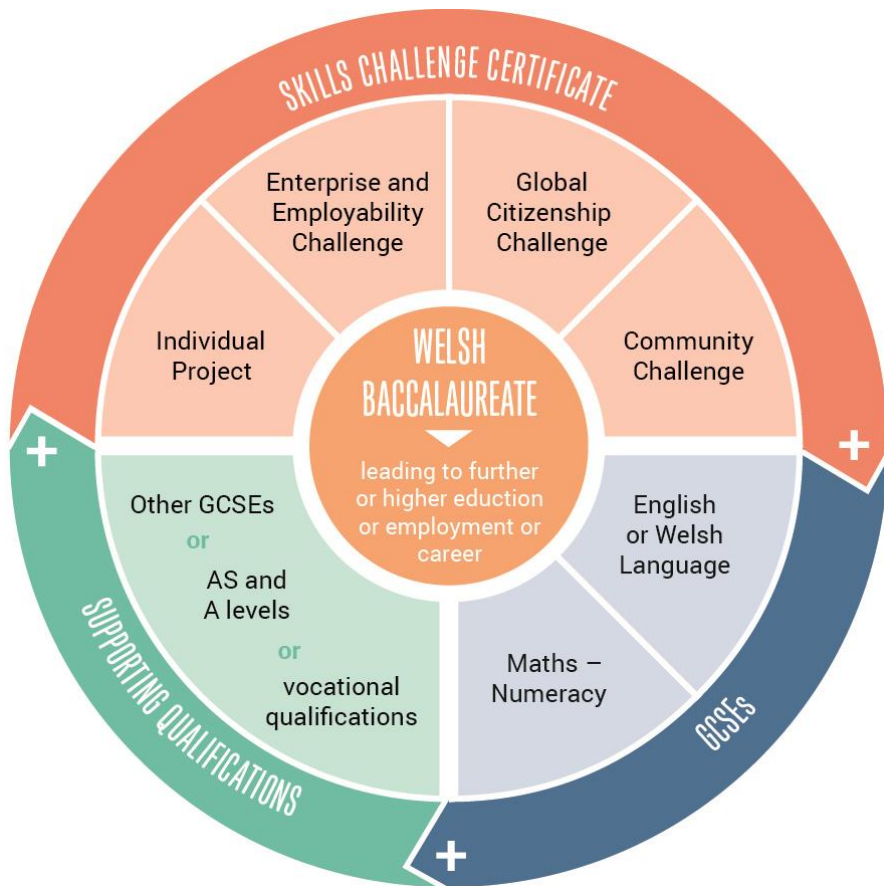


## Supporting Qualifications

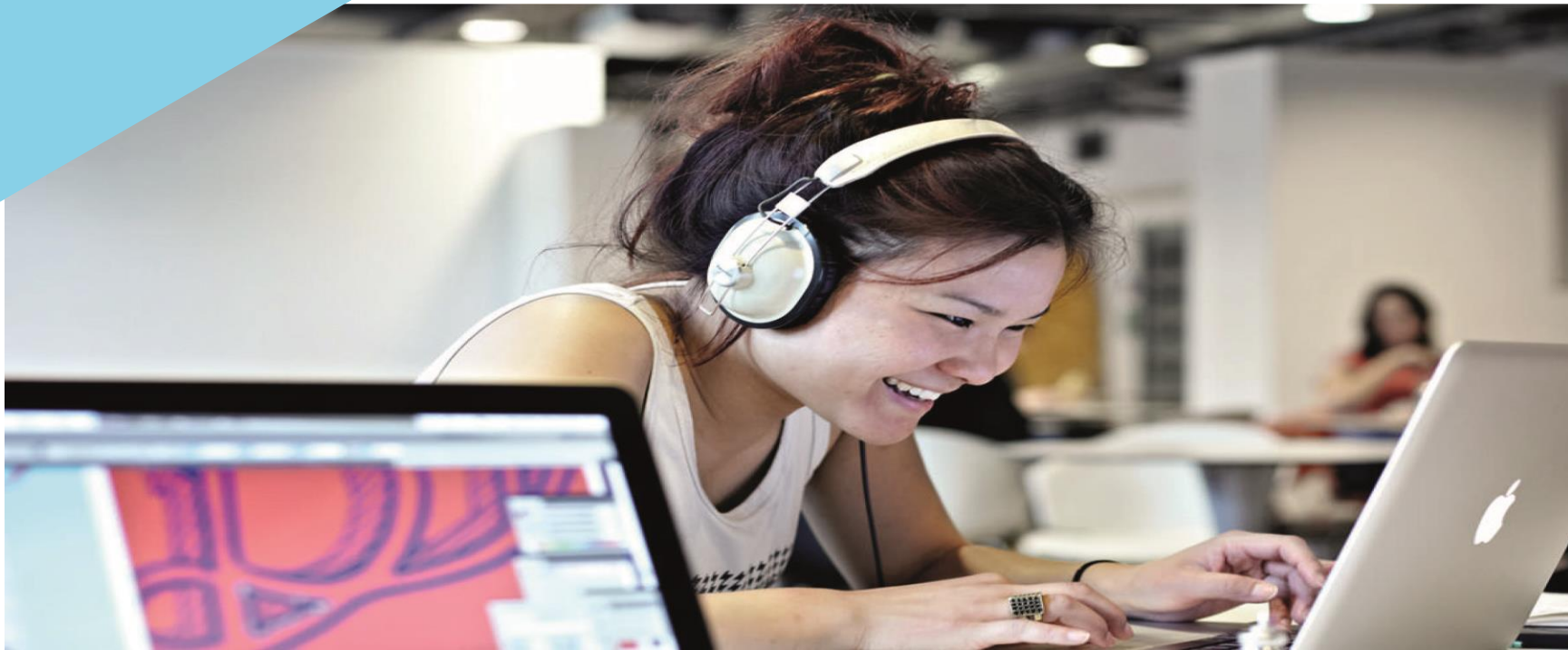




# Welsh Baccalaureate



# The Challenges



## The Challenges

### Individual Project

- An independent, research-based activity through which learners demonstrate knowledge and skills that are assessed through a written account or an artefact/product supported by written evidence.

### Enterprise & Employability Challenge

- Develop enterprising skills and attributes and enhance employability

### Global Citizenship Challenge

- Understand and respond appropriately to a global issue

### Community Challenge

- Identify, develop and participate in opportunities that will benefit the local community

## Key stage 4

At Key Stage 4, all learners will follow the same programme of learning for the Welsh Bacc.

Their level will be determined by assessment.

These are:

- Foundation Welsh Baccalaureate (level 1) will be graded Pass\* and Pass
- National Welsh Baccalaureate (level 2) will be graded A\*, A, B and C

## Post 16

At schools and colleges post 16, learners will study either:

- Foundation or National post 16 Welsh Bacc
- Advanced Welsh Bacc.

## Advanced Welsh Bac

It is the same size as an A level and graded in the same way (A\* to E).

UCAS expect to allocate the same tariff points for university entry as for an A level (the number of points allocated to each grade will match the points for the equivalent A level grade).

## Essential Skills

All of these skills will be developed in a variety of ways across the curriculum and throughout learning and life.

- Literacy
- Numeracy
- Digital Literacy
- Critical Thinking & Problem Solving
- Planning & Organisation
- Creativity & Innovation
- Personal Effectiveness

## Views of Stakeholders on the Welsh Baccalaureate



<http://qualifiedforlife.org.uk/welsh-baccalaureate>



[qualifiedforlife.org.uk](https://qualifiedforlife.org.uk)